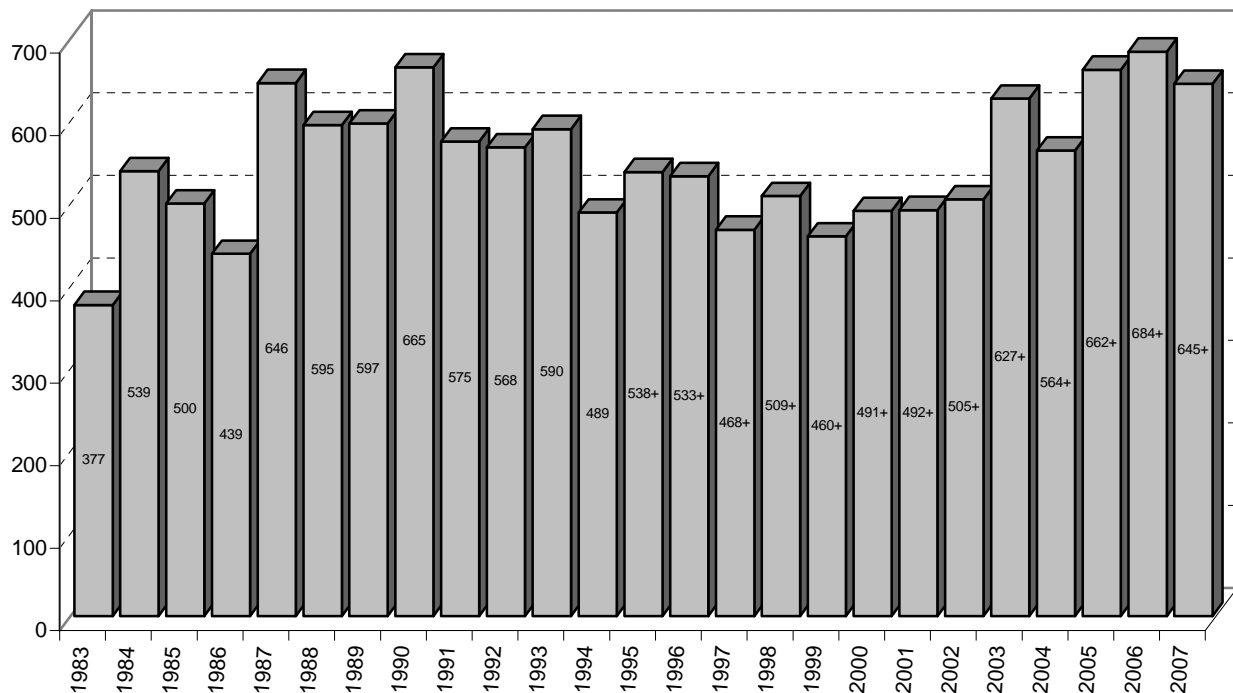


## Bar Graph by Year

The bar graph in Figure #1 depicts the total number of applications reviewed by the County Planning Department from 1983 through 2007. The number of application referrals to the county was at an all time low of 377 in 1983. Until 2005, the peak for the number of applications received by the County occurred in 1990, with a total of 665 reviews. Beginning December 1994, the county began entering into agreements with municipalities throughout the county to streamline the GML process. Reviews that were typically deemed “for local determination” by the Planning Department are now being waived for review by the County if they fall within the selected criteria and an agreement has been reached between the County and municipality. Of twenty-four municipalities, all five towns and thirteen of the nineteen municipalities have entered into waiver agreements. Therefore, the number of applications reviewed by the county in 1995 through 2007 would have been even higher if all reviews were referred to the Planning Department. Prior to the agreements between the County and municipalities, the average number of reviews per year was 548. Since the waiver agreements, the average number of applications reviewed per year is 552. Despite the waiver agreements, the number of applications reviewed by the County in 2007 was 644, the fifth highest reviewed in history.

**Figure 1. Number of GML Applications by Year Reviewed  
by the Rockland County Planning Department  
1983-2007**



+ : These numbers do not include reviews that were waived because of agreements between the county and municipalities.  
Prepared by the Rockland County Department of Planning - January 2008